

p{arc}design  
INTERIOR ARCHITECTURE

abn 50 127 739 495  
office. 1300 788 520 intl. +61 2 9437 3040  
info@p-arcdesign.com www.p-ARCdesign.com  
Suite 403, 270 Pacific Hwy, Crows Nest NSW 2065 Australia

# ABOUT p{arc}design

p-ARCdesign.com is an interdisciplinary creative studio established in 2004. We are proud to have been nominated for Best Illustration, Best Packaging and Best Industry Design at the Desktop Create Awards.

Our projects focus on commercial, residential and multi-residential interior design including renovations, refurbishments and fit-outs for new spaces. We also promote adaptive re-use of interior space. With a passion for style and colour, we fuse our design philosophy of contemporary form, function and flow with all of our developments.

We approach all interior design projects with a positive attitude and a strong determination to work with you and fulfill your requests. Our professional team at p-ARCdesign.com is creative, highly qualified and committed to producing effective solutions for your space.

Our 8 years of industry experience has gained us a large foundation of satisfied clients in both Australia and Asia, allowing us to work collaboratively with other architects and builders to encourage superior results.

## INTERIOR DESIGN

- Retail Design/Renovation
- Hospitality Design/Renovation
- Commercial Design/Renovation
- Residential Design/Renovation
- Interior Decoration/Styling
- Interior Staging

## FITOUTS & CONSTRUCTION

- Construction
- Interior Fitout and Joinery
- Refurbishment and Renovation

## COUNCIL & AUTHORITIES APPROVAL

- Building Approval
- DA (Development Application)
- CC (Construction Certificate)
- CDC (Complying Development Certificate)
- OC (Occupation Certificate)
- ...and other Certificates

## MULTIMEDIA DESIGN

- Branding
- Corporate Identity
- Promotion and Marketing materials
- Menu board and Signage



# MULTI-RESIDENTIAL DESIGN

# #01 HORNSBY DOULLOS APARTMENTS

TYPE/MULTI-RESIDENTIAL INTERIOR DESIGN

LOCATION/HORNSBY, NSW.





## #02 HORNSBY DOULOS APARTMENTS

### URBAN SLEEK

### COLORCONCEPT



### BATHROOM

Be enticed by the sultry soothing overtones of the cool charcoal greys. Its chic, fashionable and contemporary. Features of the bathroom are as follows, the wall tiles will have a slight off-white tinge, while for the floor tiles we will use a slightly darker grey. A wall mounted vanity, with the sink over hung. For the mirror we are planning to extend it the length of the wall. The bath, will also include a shower mixer and a glass shower screen.



### KITCHEN

For the cool, calm, & collected, soothing yet trendy, it creates a perfect environment for you to relax after returning from the hustle and bustle of busy city life. Think smooth, gloss, streamline, contemporary. We will use an off white to create a neutral base, with feature colours of various tones of gun metal grey, warming things up with a hint of beige.



## #03 HORNSBY DOULOS APARTMENTS

TYPE/MULTI-RESIDENTIAL INTERIOR DESIGN

LOCATION/HORNSBY, NSW.

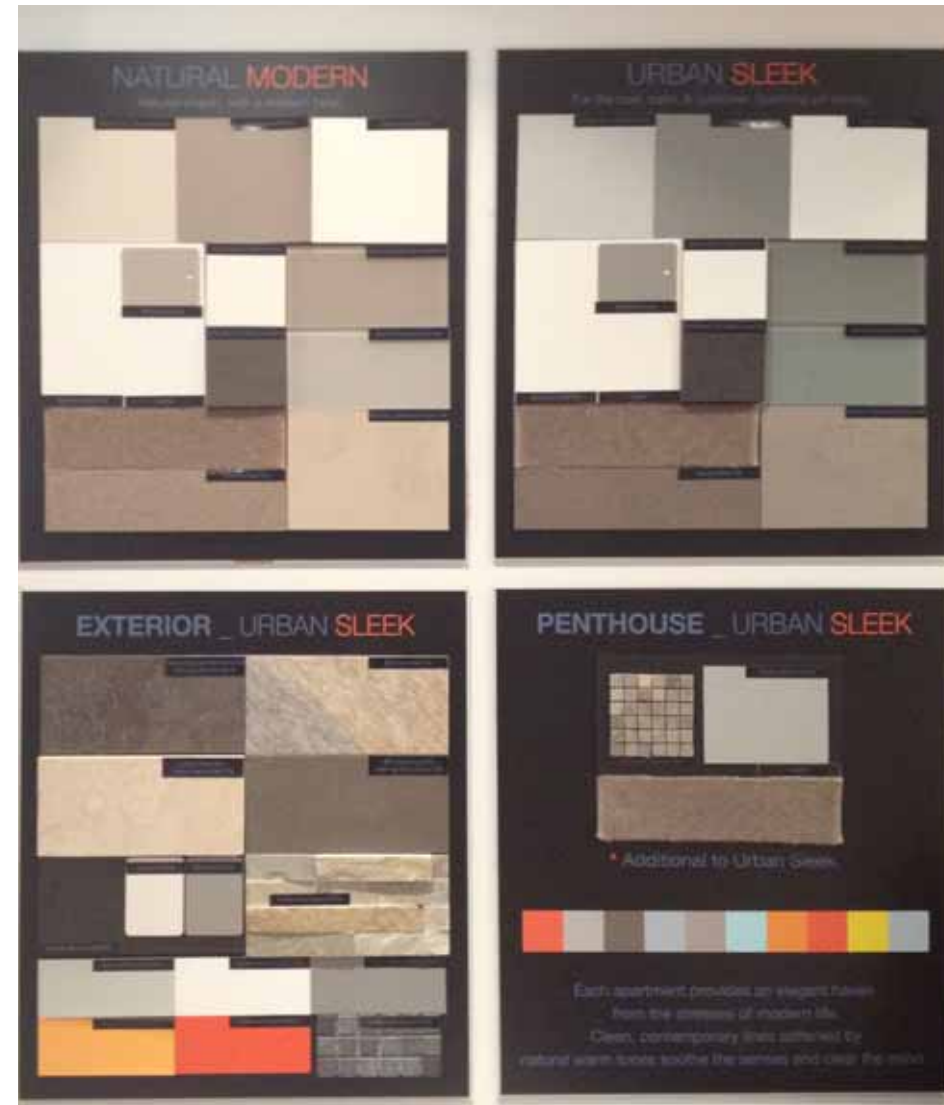




# #04 HORNSBY DOULLOS APARTMENTS

TYPE/MULTI-RESIDENTIAL INTERIOR DESIGN

LOCATION/HORNSBY, NSW.



# #01 KILLARA APARTMENTS

TYPE/MULTI-RESIDENTIAL INTERIOR DESIGN

LOCATION/BRUCE AVE. KILLARA, NSW.

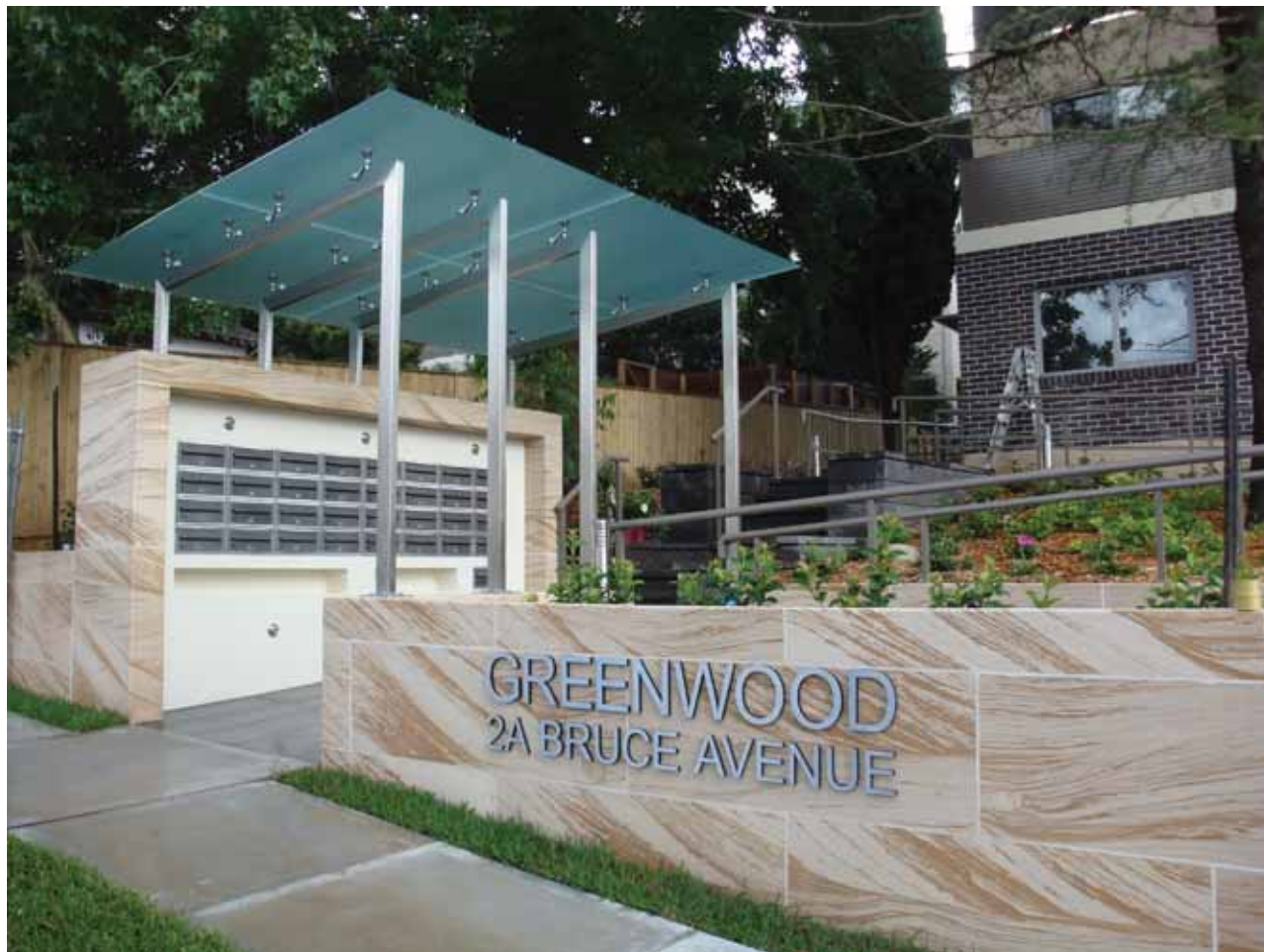




## #02 KILLARA APARTMENTS

TYPE/MULTI-RESIDENTIAL INTERIOR DESIGN

LOCATION/BRUCE AVE. KILLARA, NSW.



## #03 KILLARA APARTMENTS

TYPE/MULTI-RESIDENTIAL INTERIOR DESIGN

LOCATION/BRUCE AVE. KILLARA, NSW.





# #01 HUNTERS HILL NSW

TYPE/RESIDENTIAL INTERIOR DESIGN

LOCATION/8 CROISSY AVE HUNTERS HILL NSW



## #02 HUNTERS HILL NSW

TYPE/RESIDENTIAL INTERIOR DESIGN

LOCATION/8 CROISSY AVE HUNTERS HILL NSW

## PROPOSED MASTER BEDROOM



LUXE KINGSIZE BED IN 'WARWICK' LUSTRELL FLUTE SILVER  
'DOMAYNE' \$2299 SALE \$1678  
(MATTRESS \$2799 SALE \$1548)



LUXE KINGSIZE BLANKET BOX IN 'WARWICK' LUSTRELL  
FLUTE SILVER 'DOMAYNE' \$1599 SALE \$1167



CARPET REPUBLIC SECOND STUDIO



LIFE INTERIORS \$1189



'COCO REPUBLIC'S \$795



LIFE INTERIORS \$349



NEED TO FIND AUSTRALIAN SUPPLIER



'BLOCCO' 'BEYOND FURNITURE' GLOSSY 1200mm  
\$1199



SMOKE SIDE TABLES 'DOMAYNE' \$2334 (FOR PAIR)  
BEACON LIGHTING \$130 (EACH)

<div><div>p{arc}design</div><div>INTERIOR ARCHITECTURE</div><div>info@madsolutions.com.au, 1300 788 520 suite 403, 270 Pacific Hwy Crows Nest NSW 2065</div></div>	Generally the builder shall comply with the requirement of the local authorities and adhere to the provisions of the Building Code Australia, Building Service (BSA), and the relevant Standards Association of Australia. All dimensions shown on the drawing are to be checked on site before work commences, any queries are to be directed to the design authority. Figure dimensions ONLY are to be used, with no direct scaling from the drawings allowed. All levels are to be checked and verified on site before building work commences. This drawing is copyright and is the property of MAD Creative Solutions and must not be reprinted or used with out MAD Creative Solutions Approval.				PROJECT NAME & ADDRESS		DATE	NORTH
					8 CROISSEY AVE HUNTERS HILL NSW		10.04.2012	
							SCALE	
					DRAWING TITLE		DRAWING NO.	AMENDMENT
	A	8 CROISSEY AVE HUNTERS HILL NSW	LW	10.04.2012				
	ISSUE		BY	D/TE	INTERIOR DESIGN PROPOSED MASTER BED ROOM			
AMENDMENT								

## PROPOSED LIVING ROOM



'CUSTOM MADE ENTERTAINMENT UNIT



'LIFE INTERIORS' \$1499



DIMORA DEN MODULAR & VILLA 'DOMAYNE' \$7999 SALE PRICE \$6000  
BLACK GERMAN NON SCRATCH PREMIUM LEATHER



'LIFE INTERIORS' \$265



SLOANE COFFEE TABLE 'COCO REPUBLIC' \$1995




## CHROME AND GLASSSIDE TABLES 'DOMAYNE'



'CARPET REPUBLIC' \$3542 (2400x1800 size)



'LIFE INTERIORS' \$989

 <p>info@madofsolutions.com.au, 1300 788 520 suite 403, 270 Pacific Hwy Crows Nest NSW 2065</p>	<p>Generally the builder shall comply with the requirement of the local authorities and adhere to the provision of the Building Code Australia, Building Standards (BCSA) and the relevant Standards Associations of Australia. All dimensions shown on the drawing are to be checked on site before work commence, any queries are to be directed to the design authority. Figure dimensions ONLY are to be used, with no direct scaling from the drawings allowed. All items to be checked and verified on site before building work commence. This drawing is copyright and is the property of MAD Creative Solutions and must not be retained or used by any MAD Creative Solutions' Approval.</p>				<p>PROJECT NAME &amp; ADDRESS</p> <p><b>8 CROISSEY AVE HUNTERS HILL NSW</b></p>		<p>DATE</p> <p><b>10.04.2012</b></p>	<p>NORTH</p>
	<p>A</p> <p><b>8 CROISSEY AVE HUNTERS HILL NSW</b></p>		<p>LW</p> <p><b>10.04.2012</b></p>	<p>DRAWING TITLE</p> <p><b>INTERIOR DESIGN PROPOSED LIVING ROOM</b></p>		<p>SCALE</p>	<p>DRAWING NO.</p>	<p>AMENDMENT</p>
	<p>ISSUE</p>	<p>BY</p>	<p>D/TE</p>					
<p>AMENDMENT</p>								



## #03 HUNTERS HILL NSW

TYPE/RESIDENTIAL INTERIOR DESIGN

LOCATION/8 CROISSY AVE HUNTERS HILL NSW



## #04 HUNTERS HILL NSW

TYPE/RESIDENTIAL INTERIOR DESIGN

LOCATION/8 CROISSY AVE HUNTERS HILL NSW





# #01 BELLEVUE HILL RESIDENCE

TYPE/RESIDENTIAL INTERIOR DESIGN  
LOCATION/VICTORIA BELLEVUE, NSW.

## ELEVATIONS



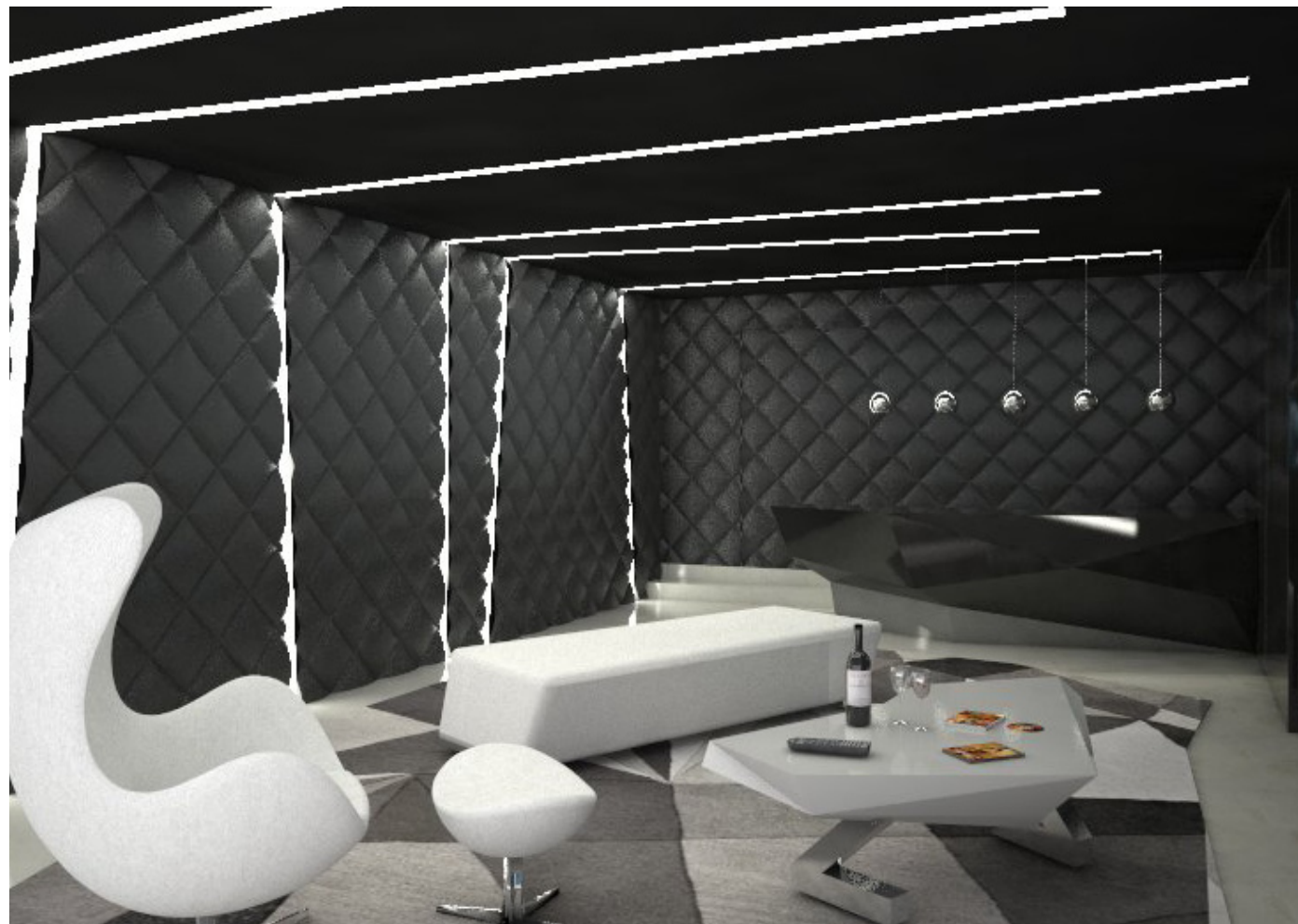
## EXTERIOR DESIGN



## #02 BELLEVUE HILL RESIDENCE

TYPE/RESIDENTIAL INTERIOR DESIGN

LOCATION/VICTORIA BROAD ELLEVUE, NSW.





# #01 WOOLLOOMOOLOO INTERIOR DESIGN & DECORATION

TYPE/RESIDENTIAL INTERIOR DESIGN  
LOCATION/WOOLLOOMOOLOO, NSW

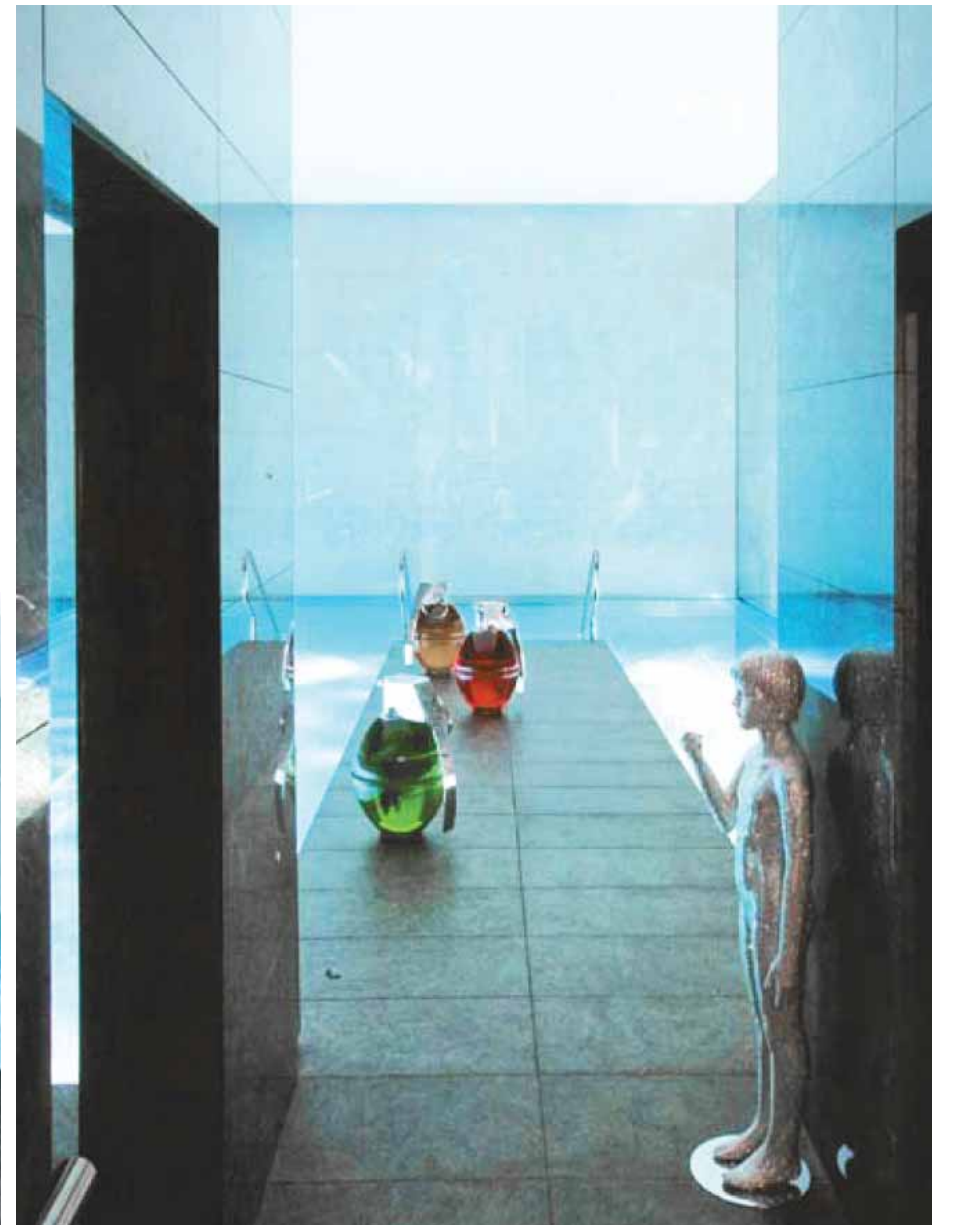




# #01 AVALON INTERIOR DESIGN & DECORATION

TYPE/RESIDENTIAL INTERIOR DESIGN

LOCATION/AVALON, NSW





# RETAIL & HOSPITALITY DESIGN

# #01 SOBAN RESTAURANT

TYPE/HOSPITALITY INTERIOR DESIGN

LOCATION/WESTFIELDS, HORNSBY NSW

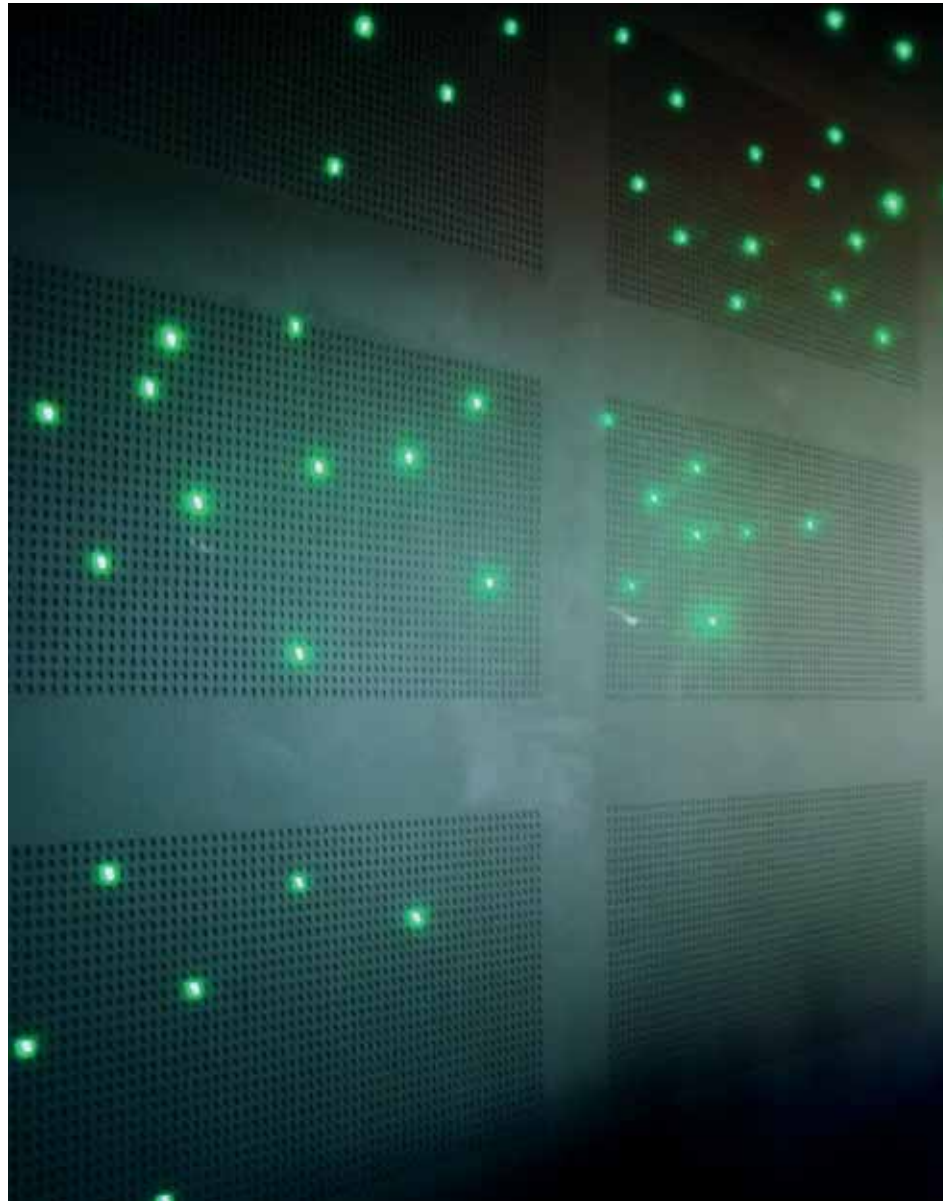




## #02 SOBAN RESTAURANT

TYPE/HOSPITALITY INTERIOR DESIGN

LOCATION/WESTFIELDS, HORNSBY NSW





## #03 SOBAN RESTAURANT

TYPE/HOSPITALITY INTERIOR DESIGN

LOCATION/WESTFIELDS, HORNSBY NSW





## #04 SOBAN RESTAURANT

TYPE/HOSPITALITY INTERIOR DESIGN

LOCATION/CHATSWOOD, NSW





## #05 SOBAN RESTAURANT

TYPE/HOSPITALITY INTERIOR DESIGN

LOCATION/CHATSWOOD, NSW





# #01 BLUEFIN SUSHI

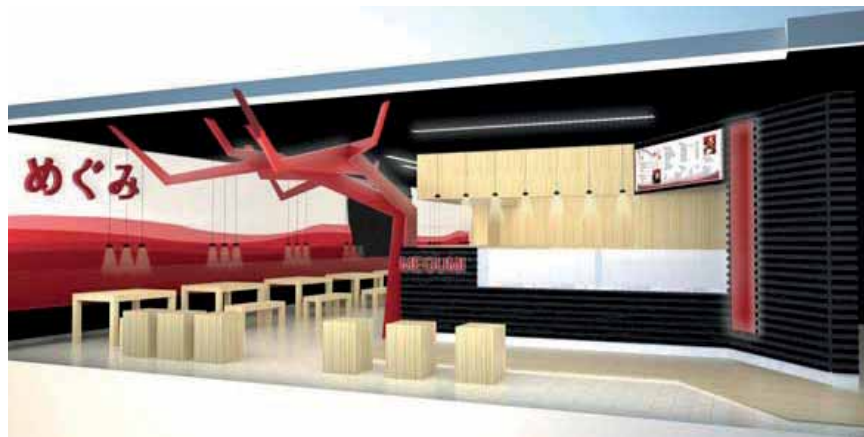
TYPE/RETAIL DESIGN

LOCATION/ WESTFIELD CHATSWOOD



# #01 MEGUMI

TYPE/RETAIL CONCEPT DESIGN  
LOCATION/WYNYARD, NSW





# #01 KENZISAKEBAR

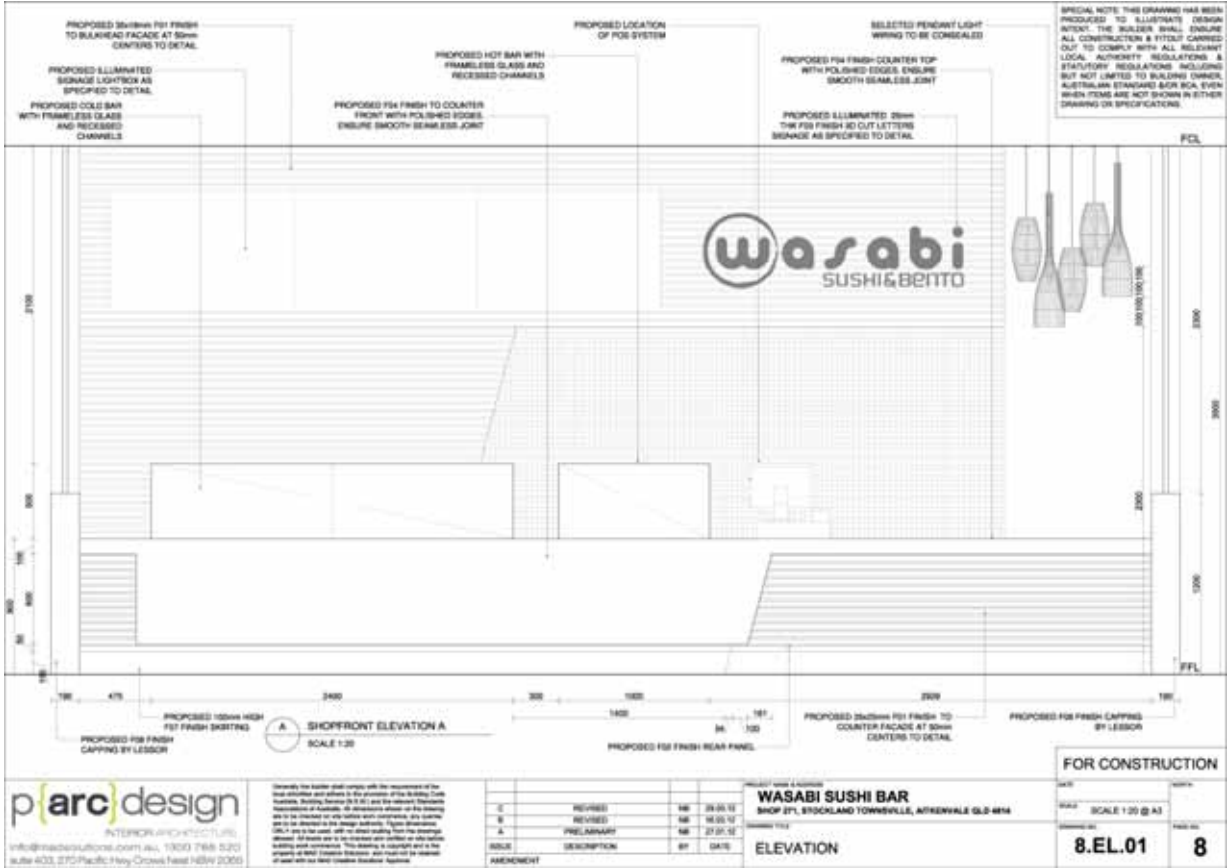
TYPE/RETAIL INTERIOR DESIGN  
LOCATION/ENTERTAINMENT QUARTER, MOORE PARK





# #01 WASABI

TYPE/RETAIL INTERIOR DESIGN  
LOCATION/TOWNSVILLE, QLD





# #01 MORO MORO

TYPE/HOSPITALITY INTERIOR DESIGN  
LOCATION/ENTERTAINMENT QUARTER MOORE PARK, NSW



# #01 RVISION

TYPE/OFFICE SPACE DESIGN  
LOCATION/MACQUARIE PARK





# #01 ROKUJUNI

TYPE/HOSPITALITY INTERIOR DESIGN  
LOCATION/62 CLARENCE ST SYDNEY, NSW





# #22 ROKUJUNI

TYPE/GRAPHICDESIGN  
LOCATION/CLARENCE ST. SYDNEY NSW



SEBASTIEN  
TELLIER

OWNER

{ 435 FOX  
STUDIOS.  
RANDWICK,  
NSW. 2135 }

PH: 0439209722

ROKUJUNI.COM.AU

**APPETISERS**

BLACK EDAMAME \$3  
FRESH STEAMED BEAN

BLACK EDAMAME \$3  
FRESH STEAMED BEAN

BLACK EDAMAME \$3  
FRESH STEAMED BEAN

BLACK EDAMAME \$3  
FRESH STEAMED BEAN

BLACK EDAMAME \$3  
FRESH STEAMED BEAN

BLACK EDAMAME \$3  
FRESH STEAMED BEAN

BLACK EDAMAME \$3  
FRESH STEAMED BEAN

BLACK EDAMAME \$3  
FRESH STEAMED BEAN

BLACK EDAMAME \$3  
FRESH STEAMED BEAN

BLACK EDAMAME \$3  
FRESH STEAMED BEAN

**SALADS**

LEEK & SPINACH SALAD \$8  
WITH RED SOYBEAN PASTE

Tofu Salad \$7  
WITH CITRUS FLAVOURED SOY SAUCE

\*DAIKON\* RADISH SALAD \$8  
WITH OCTOPUS

**BENTO BOXES**

BLACK EDAMAME \$3  
FRESH STEAMED BEAN

Japanese Cucumber \$3  
WITH SPECIAL RICE

STRING BEANS \$3  
WITH BEAN SAUCE

\*HAPPY\* Seasoned \$8.5  
WITH SPECIAL RICE

PICKLED WHITE RADISH  
DAIKON \$4

Spicy Crab ROLL \$5  
WITH CRAB SAUCE

YAM DOLLY \$5.5  
WITH RED SOY BEAN PASTE + RICE

**SUSHI ROLLS**

BLACK EDAMAME \$3  
FRESH STEAMED BEAN

Japanese Cucumber \$3  
WITH SPECIAL RICE

STRING BEANS \$3  
WITH BEAN SAUCE

Spicy Crab ROLL \$5  
WITH CRAB SAUCE

BLACK EDAMAME \$3  
FRESH STEAMED BEAN

Japanese Cucumber \$3  
WITH SPECIAL RICE

STRING BEANS \$3  
WITH BEAN SAUCE

Spicy Crab ROLL \$5  
WITH CRAB SAUCE

BLACK EDAMAME \$3  
FRESH STEAMED BEAN

Japanese Cucumber \$3  
WITH SPECIAL RICE

**DONBURI**

LOTUS CHOPS \$6.5  
CRISPY LOTUS SERVED WITH WASABI AJOLO

EDAMAME (BOUILL) \$5.5  
STEAMED SOYBEANS SPRINKLED WITH SEA

TAKOYAKI (4 PIECES) \$6.5  
DEEP FRIED OCTOPUS BALL SERVED WITH

CRAB (6 PIECES) \$7  
CRISPY PORK + VEGETABLE CRAB

AGITASHI TOFU (4 PIECES) \$6.5  
BATTER COOKED TOFU WITH TEMPURA SAUCE

CHEEKEN KARAAGE (8 PIECES) \$7  
MARINATED CHEEKEN WITH MUSTARD SAUCE

SOFT SHELL CRAB (2 PIECES) \$10  
SERVED CRISPY W/ SALAD, WASABI AJOLO +

CHEEKEN KARAAGE (8 PIECES) \$7  
MARINATED CHEEKEN WITH MUSTARD SAUCE

SOFT SHELL CRAB (2 PIECES) \$10  
SERVED CRISPY W/ SALAD, WASABI AJOLO +

**CHOOSE YOUR**

1 MAIN { BEEF, CHICKEN, PORK, TOFU }

2 VEGETABLE { TEMPURA, SALAD, RICE SOUP }

3 SUSHI { CUCUMBER, RADISH, MISO, NIGIRI }

4 SIDE { RICE, CHICK, THEN NOODLES }

LUNCH MENU ONLY AVAILABLE FROM 12PM - 3 PM

**GRAND OPENING**

62 CLARENCE ST. SYDNEY, NSW.

**OPENING SPECIAL!**

BUY 1 BENTO BOX

**MISO SOUP**

**AND RECEIVE A FREE DRINK!**

**rokyu nai** {JAPANESE RESTAURANT}

CHICKEN KATBU BENTO 14

PORK KATBU BENTO 14

TERIYAKI CHICKEN BENTO 14

TERIYAKI SALMON BENTO 15

UNAGI BENTO 16

TEMPURA BENTO 16

ALMOND SPECIAL BENTO 20  
SUSHI AND TEMPURA

AGITASHI TOFU BENTO 13

CHEEKEN KATBU BENTO 14

PORK KATBU BENTO 14

TERIYAKI CHICKEN BENTO 14

TERIYAKI SALMON BENTO 15

UNAGI BENTO 16



# #01 RETAIL GRAPHICS

## BRANDING



## #02 RETAIL GRAPHICS

