

oro
INTERIOR
& ARCHITECTURE

WWW.ORODESIGN.COM.AU

0411 270 430 .SOPHIA MOBILE

1300 788 520 .OFFICE PHONE

info@orodesign.com.au, orodesign@gmail.com

p-arcdesign@hotmail.com, parcdesign101@gmail.com

OFFICE

Suite 403, Level 4, 270 Pacific-HWY,
Crows Nest NSW 2065 Australia

ABN 63163799960

ABOUT

Oro Design is an interdisciplinary creative studio established in 2004. We are proud to have been nominated for Best Illustration, Best Packaging and Best Industry Design at the Desktop Create Awards.

Our projects focus on commercial, residential and multi-residential interior design including renovations, refurbishments and fit-outs for new spaces. We also promote adaptive re-use of interior space. With a passion for style and colour, we fuse our design philosophy of contemporary form, function and flow with all of our developments.

We approach all interior design projects with a positive attitude and a strong determination to work with you and fulfill your requests. Our professional team at p-ARCdesign.com is creative, highly qualified and committed to producing effective solutions for your space.

Our 8 years of industry experience has gained us a large foundation of satisfied clients in both Australia and Asia, allowing us to work collaboratively with other architects and builders to encourage superior results.

INTERIOR DESIGN

- Retail Design/Renovation
- Hospitality Design/Renovation
- Commercial Design/Renovation
- Residential Design/Renovation
- Interior Decoration/Styling
- Interior Staging

FITOUTS & CONSTRUCTION

- Construction
- Interior Fitout and Joinery
- Refurbishment and Renovation

COUNCIL & AUTHORITIES APPROVAL

- Building Approval
- DA (Development Application)
- CC (Construction Certificate)
- CDC (Complying Development Certificate)
- OC (Occupation Certificate)
- ...and other Certificates

MULTIMEDIA DESIGN

- Branding
- Corporate Identity
- Promotion and Marketing materials
- Menu board and Signage



MULTI-RESIDENTIAL *DESIGN*

HORNSBY DOULLOS APARTMENTS

TYPE/MULTI-RESIDENTIAL INTERIOR DESIGN

LOCATION/HORNSBY, NSW.



HORNSBY DOULLOS APARTMENTS

TYPE/MULTI-RESIDENTIAL INTERIOR DESIGN

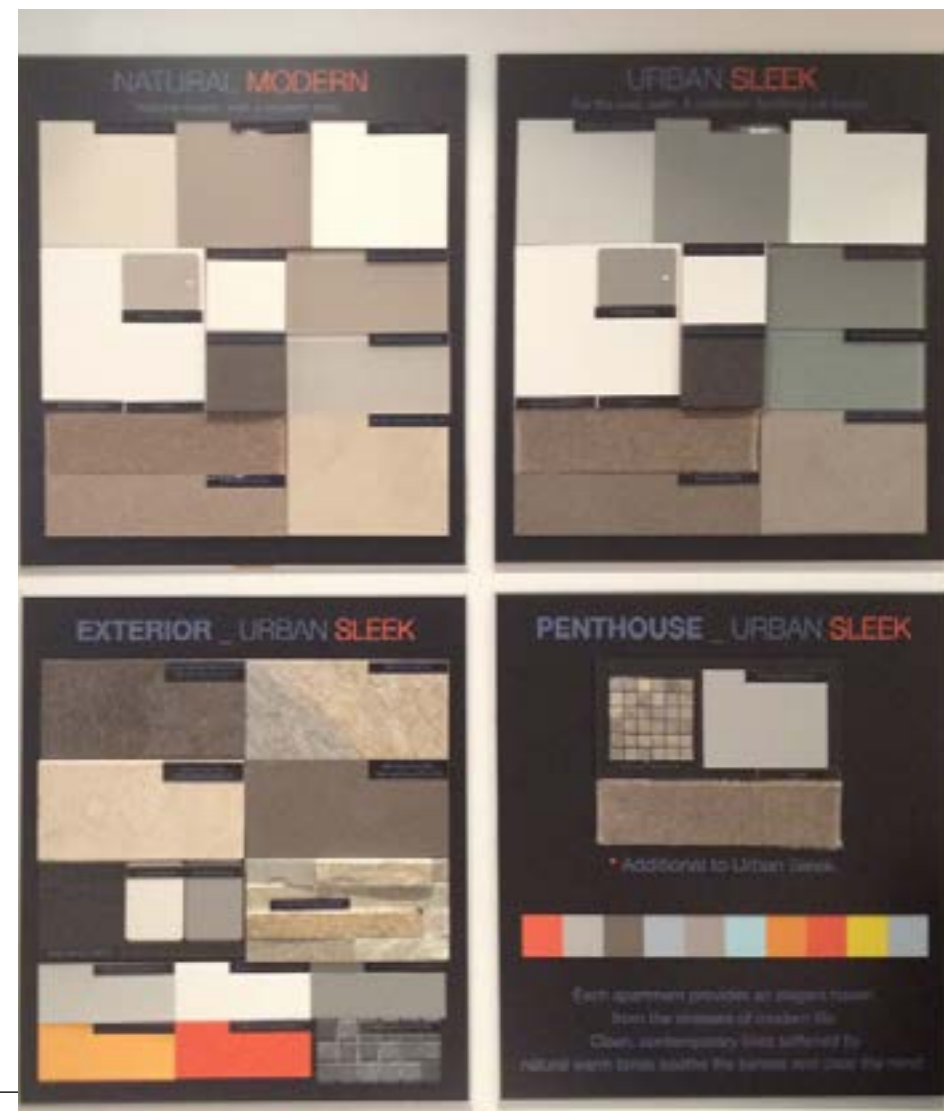
LOCATION/HORNSBY, NSW.



HORNSBY DOULLOS APARTMENTS

TYPE/MULTI-RESIDENTIAL INTERIOR DESIGN

LOCATION/HORNSBY, NSW.



RESIDENTIAL INTERIOR DESIGN

HUNTERS HILL NSW

TYPE/RESIDENTIAL INTERIOR DESIGN
LOCATION/8 CROISSY AVE HUNTERS HILL NSW



HUNTERS HILL NSW

TYPE/RESIDENTIAL INTERIOR DESIGN

LOCATION/8 CROISSY AVE HUNTERS HILL NSW

PROPOSED MASTER BEDROOM



LUXE KINGSIZE BED IN 'WARWICK' LUSTRELL FLUTE SILVER
'DOMAYNE' \$2299 SALE \$1678
(MATTRESS \$2799 SALE \$1548)



LUXE KINGSIZE BLANKET BOX IN 'WARWICK' LUSTRELL
FLUTE SILVER 'DOMAYNE' \$1599 SALE \$1167



CARPET REPUBLIC SECOND STUDIO



LIFE INTERIORS \$1189



'COCO REPUBLIC'S \$795



LIFE INTERIORS \$349



NEED TO FIND AUSTRALIAN SUPPLIER



'BLOCCO' BEYOND FURNITURE' GLOSSY 1200mm
\$1199



SMOKE SIDE TABLES 'DOMAYNE' \$2334 (FOR PAIR)
BEACON LIGHTING \$130 (EACH)

<div><div>p{arc}design</div><div>INTERIOR ARCHITECTURE</div><div>info@madofsolutions.com.au, 1300 788 520 suite 403, 270 Pacific Hwy Crows Nest NSW 2065</div></div>	Generally, the indoor shall comply with the requirement of the local authorities and adhere to the provision of the Building Code Australia, Building Services (N.S.W.) and the relevant Standards Associations of Australia. All dimensions shown on the drawing are to be checked on site before work commences, any queries are to be directed to the design authority. Figure dimensions ONLY are to be used, with no direct scaling from the drawings allowed. All notes are to be checked on site before the building work commences. This drawing is copyright and is the property of MAD Creative Solutions and must not be released or used without MAD Creative Solutions' Approval.				PROJECT NAME & ADDRESS 8 CROISSEY AVE HUNTERS HILL NSW		DATE 10.04.2012	NOTED	
					DRAWING TITLE		SCALE	DRAWING NO.	AMENDMENT
	A 8 CROISSEY AVE HUNTERS HILL NSW				LW	10.04.2012			
	ISSUE				BY	DR	TE	INTERIOR DESIGN PROPOSED MASTER BED ROOM	
	AMENDMENT								



'CUSTOM MADE ENTERTAINMENT UNIT



'LIFE INTERIORS' \$1499



DIMORA DEN MODULAR & VILLA 'DOMAYNE' \$7999 SALE PRICE \$6000
BLACK GERMAN NON SCRATCH PREMIUM LEATHER



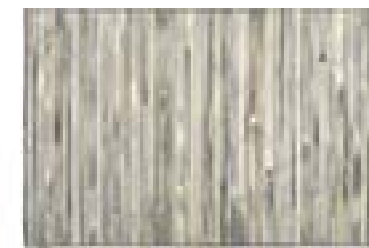
'LIFE INTERIORS' \$265



SLOANE COFFEE TABLE 'COCO REPUBLIC' \$1995




CHROME AND GLASSSIDE TABLES 'DOMAYNE'



'CARPET REPUBLIC' \$3542 (2400x1800 size)



'LIFE INTERIORS' \$989

 <p>info@madsolutions.com.au, 1300 788 520 02 9390 0300 (landline) 02 9390 0265 (mobile)</p>	Generally the builder shall comply with the requirement of the local authorities and adhere to the provision of the Building Code Australia, Building Standards (NSW) and the relevant Standards Association of Australia. All dimensions shown on the drawing are to be checked on site before work commences, any queries are to be directed to the design authority. Figure dimensions ONLY are to be used, with no direct scaling from the drawings. All levels are to be checked and verified on site before building work commences. This drawing is copyright and is the property of MAD Creative Solutions and must not be re-used				PROJECT NAME & ADDRESS 8 CROISSEY AVE HUNTERS HILL NSW		DATE 10.04.2012	NORTH
					DRAWING TITLE INTERIOR DESIGN PROPOSED LIVING ROOM		SCALE DRAWING NO., APPENDIX/NOT	
	A ISSUE	8 CROISSEY AVE HUNTERS HILL NSW	LW BY	10.04.2012 DT				

HUNTERS HILL NSW

TYPE/RESIDENTIAL INTERIOR DESIGN

LOCATION/8 CROISSY AVE HUNTERS HILL NSW



HUNTERS HILL NSW

TYPE/RESIDENTIAL INTERIOR DESIGN

LOCATION/8 CROISSY AVE HUNTERS HILL NSW



BELLEVUE HILL RESIDENCE

TYPE/RESIDENTIAL INTERIOR DESIGN
LOCATION/VICTORIA BELLEVUE, NSW.



EXTERIOR DESIGN



BELLEVUE HILL RESIDENCE

TYPE/RESIDENTIAL INTERIOR DESIGN

LOCATION/VICTORIA BROAD ELLEVUE, NSW.



WOOLLOOMOOLOO *INTERIOR DESIGN & DECORATION*

TYPE/RESIDENTIAL INTERIOR DESIGN

LOCATION/WOOLLOOMOOLOO, NSW



AVALON INTERIOR DESIGN & DECORATION

TYPE/RESIDENTIAL INTERIOR DESIGN

LOCATION/AVALON, NSW



*RETAIL &
HOSPITALITY
DESIGN*

YO STORY

TYPE/HOSPITALITY CARE INTERIOR DESIGN
LOCATION/WARRINGAH MALL, NSW





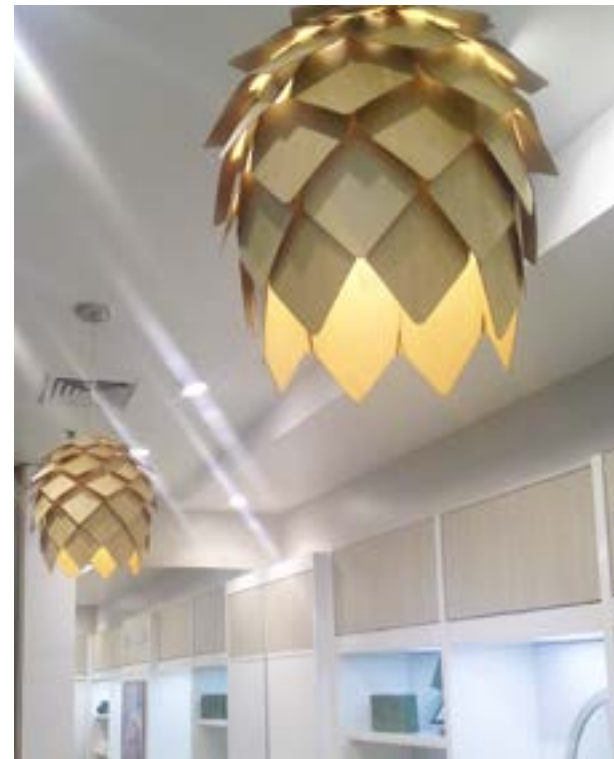
ORIGANI (CONCEPT PROPOSAL)

TYPE/RETAIL INTERIOR DESIGN
LOCATION/MYER CENTRE, BRISBANE



ORIGANI

TYPE/RETAIL INTERIOR DESIGN
LOCATION/ PARRAMATTA WESRFIELD, NSW



BLUE BIRD - TOWN HALL

TYPE/HOSPITALITY INTERIOR DESIGN
LOCATION/TOWN HALL, NSW



LITTLE TOKYO

TYPE/HOSPITALITY INTERIOR DESIGN
LOCATION/NORTH SYDNEY, NSW



EVOLUTION LASER CLINIC

TYPE/HEALTHY CARE INTERIOR DESIGN
LOCATION/CAMBELLTOWN, NSW



NOOK FRESH BAR

TYPE/HOSPITALITY INTERIOR DESIGN
LOCATION/WYNYARD, NSW



KING'S OWN INSTITUTE

TYPE/UNIVERSITY OFFICE INTERIOR DESIGN
LOCATION/SYDNEY CITY, NSW



NIKO SUSHI

TYPE/HOSPITALITY CARE INTERIOR DESIGN
LOCATION/WESTFIELD PARRAMATTA, NSW



ROKUJUNI - CLARENCE ST.

TYPE/HOSPITALITY INTERIOR DESIGN
LOCATION/62 CLARENCE ST SYDNEY, NSW



ROKUJUNI - CLARENCE ST.

TYPE/HOSPITALITY INTERIOR DESIGN
LOCATION/62 CLARENCE ST SYDNEY, NSW



SENARIO CAFE

TYPE/HOSPITALITY INTERIOR DESIGN
LOCATION/WESTPOINT BLACKTOWN, NSW



SENARIO CAFE

TYPE/HOSPITALITY INTERIOR DESIGN
LOCATION/WESTPOINT BLACKTOWN, NSW



SENARIO CAFE

TYPE/HOSPITALITY INTERIOR DESIGN
LOCATION/WESTPOINT BLACKTOWN, NSW



ROKUJUNI - HURSTVILLE

TYPE/HOSPITALITY INTERIOR DESIGN
LOCATION/HURSTVILLE WESTFIELD, NSW



ROKUJUNI - HURSTVILLE

TYPE/HOSPITALITY INTERIOR DESIGN
LOCATION/HURSTVILLE WESTFIELD, NSW



THE ROAST HOUSE - MET CENTRE

TYPE/HOSPITALITY INTERIOR DESIGN
LOCATION/MET CENTRE, MARGARET ST, SYDNEY, NSW



BEFORE



AFTER

CAFE SIENNA

TYPE/HOSPITALITY INTERIOR DESIGN
LOCATION/BURWOOD WESTFIELD, NSW



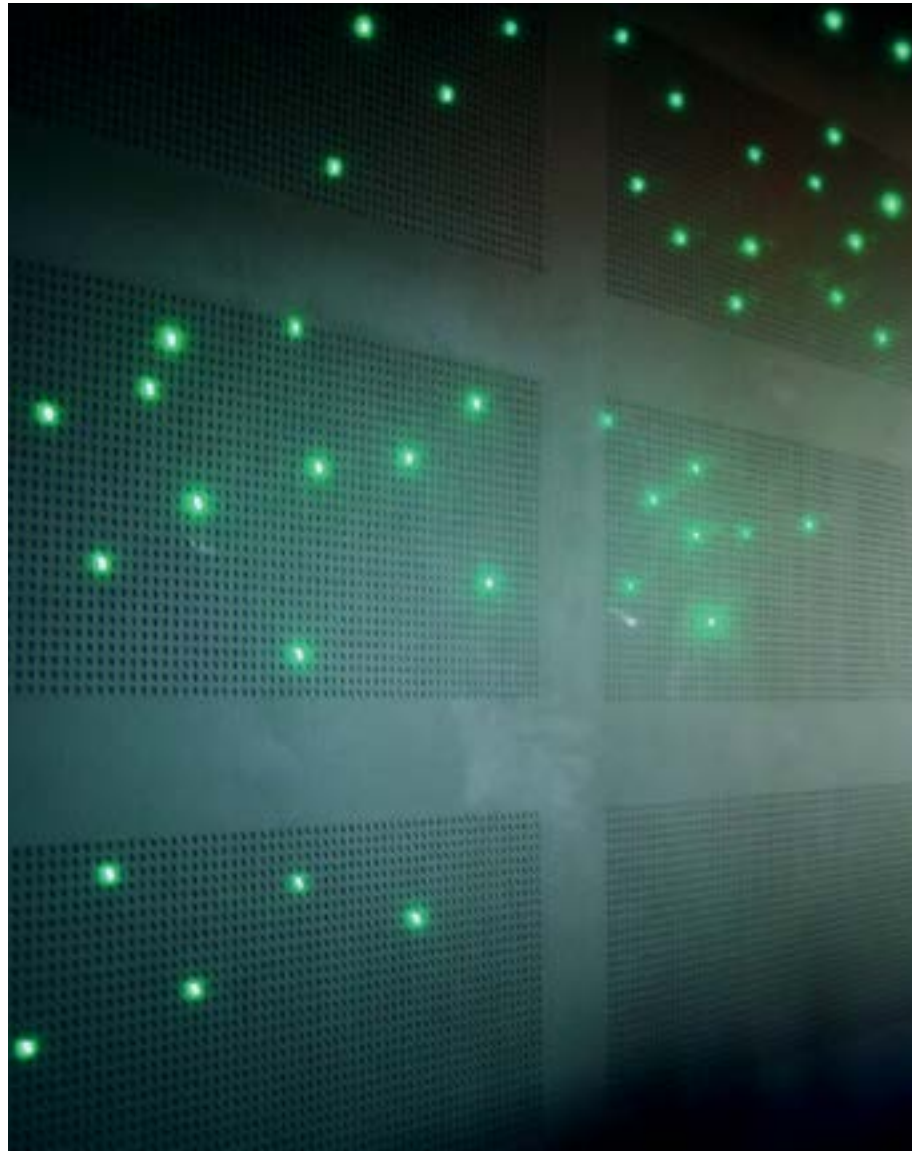
SOBAN RESTAURANT

TYPE/HOSPITALITY INTERIOR DESIGN
LOCATION/WESTFIELDS, HORNSBY NSW



SOBAN RESTAURANT

TYPE/HOSPITALITY INTERIOR DESIGN
LOCATION/WESTFIELDS, HORNSBY NSW



SOBAN RESTAURANT

TYPE/HOSPITALITY INTERIOR DESIGN
LOCATION/WESTFIELDS, HORNSBY NSW



SOBAN CHATSWOOD

TYPE/HOSPITALITY INTERIOR DESIGN

LOCATION/CHATSWOOD, NSW



KENZI SAKE BAR

TYPE/RETAIL INTERIOR DESIGN
LOCATION/ENTERTAINMENT QUARTER, MOORE PARK



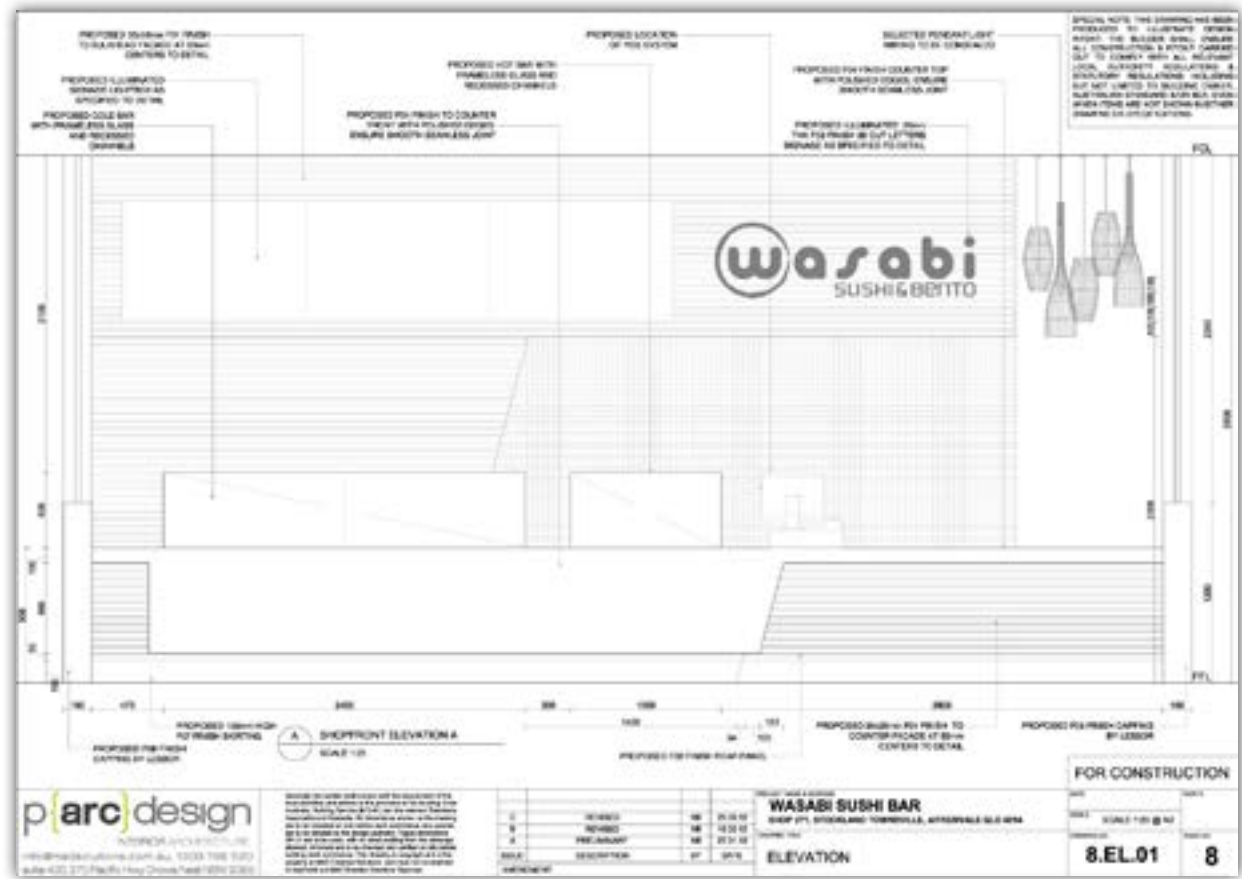
KENZI SAKE BAR

TYPE/RETAIL INTERIOR DESIGN
LOCATION/ENTERTAINMENT QUARTER, MOORE PARK



WASABI

TYPE/RETAIL INTERIOR DESIGN
LOCATION/TOWNSVILLE, QLD



MORO MORO

TYPE/HOSPITALITY INTERIOR DESIGN
LOCATION/ENTERTAINMENT QUARTER MOORE PARK, NSW



FRUITION (CONCEPT PROPOSAL)

TYPE/HOSPITALITY INTERIOR DESIGN
LOCATION/MET CENTRE, MARGARET ST, SYDNEY, NSW



KENZI IZAKAYA - (CONCEPT PROPOSAL)

TYPE/HOSPITALITY INTERIOR DESIGN
LOCATION/CHATSWOOD, NSW

ZENZI IZAKAYA MATERIALS BOARD

1

4

6

7

8

9

10

11

12

14

15

16

17

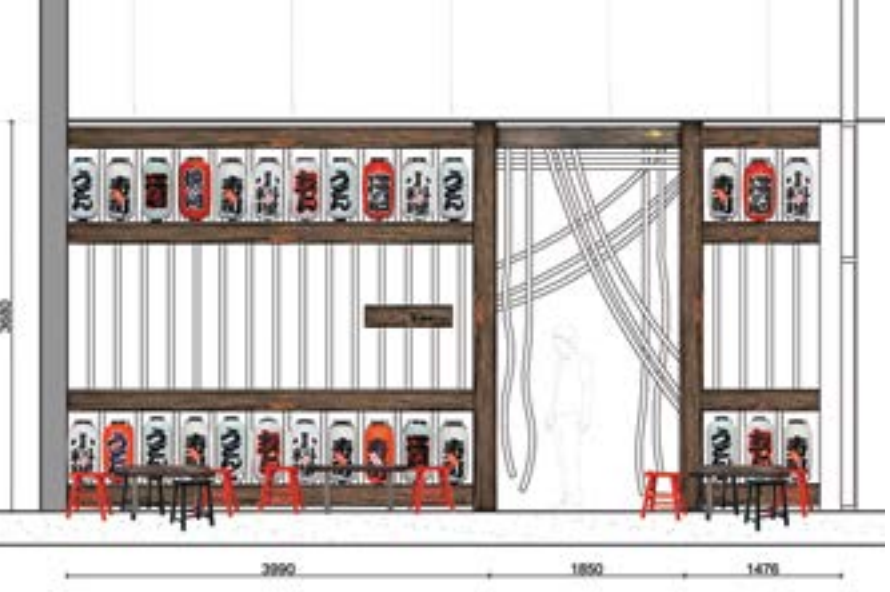
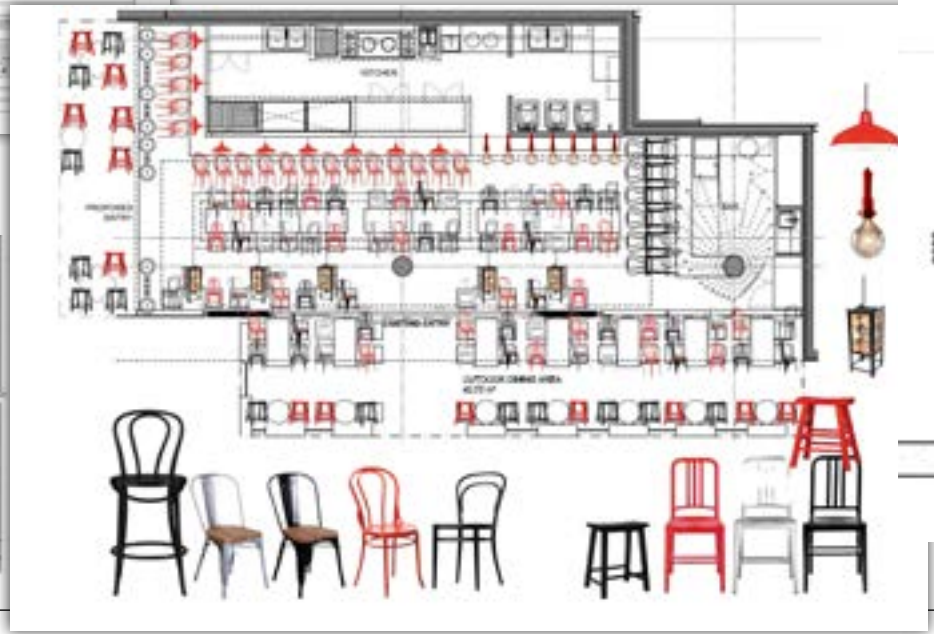
2

3

Kenzi

sake bar

1. Dark grey wall panel	2. Red pendant light
2. Red wall panel	3. Three hanging sake bottles
3. Japanese painting of a woman in a kimono	
4. Kenzi sake bar logo	
5. Japanese painting of a woman in a kimono	
6. Red wall panel	
7. Dark grey wall panel	
8. Japanese painting of a woman in a kimono	
9. Red wall panel	
10. Dark grey wall panel	
11. Japanese painting of a woman in a kimono	
12. Red wall panel	
13. Japanese painting of a woman in a kimono	
14. Dark grey wall panel	
15. Red wall panel	
16. Japanese painting of a woman in a kimono	
17. Red bar stool	



KENZI IZAKAYA - CHATSWOOD

TYPE/HOSPITALITY INTERIOR DESIGN
LOCATION/CHATSWOOD, NSW



ROKUJUNI - CHATSWOOD

TYPE/HOSPITALITY INTERIOR DESIGN
LOCATION/CHATSWOOD WESTFIELD, NSW



MASTU SUSHI - BROOKVALE

TYPE/HOSPITALITY INTERIOR DESIGN
LOCATION/WESTFIELD WARRINGAH MALL, BROOKVALE, NSW



THE FACE SHOP - CITY (CONCEPT PROPOSAL)

TYPE/RETAIL INTERIOR DESIGN
LOCATION/CITY, NSW



VISUAL IDENTITY

TYPE/VISUAL IDENTITY DESIGN
BUSINESS/KENZI SAKE BAR



VISUAL IDENTITY

TYPE/VISUAL IDENTITY DESIGN
BUSINESS/MOROMORO JAPANESE TAKEAWAY

